

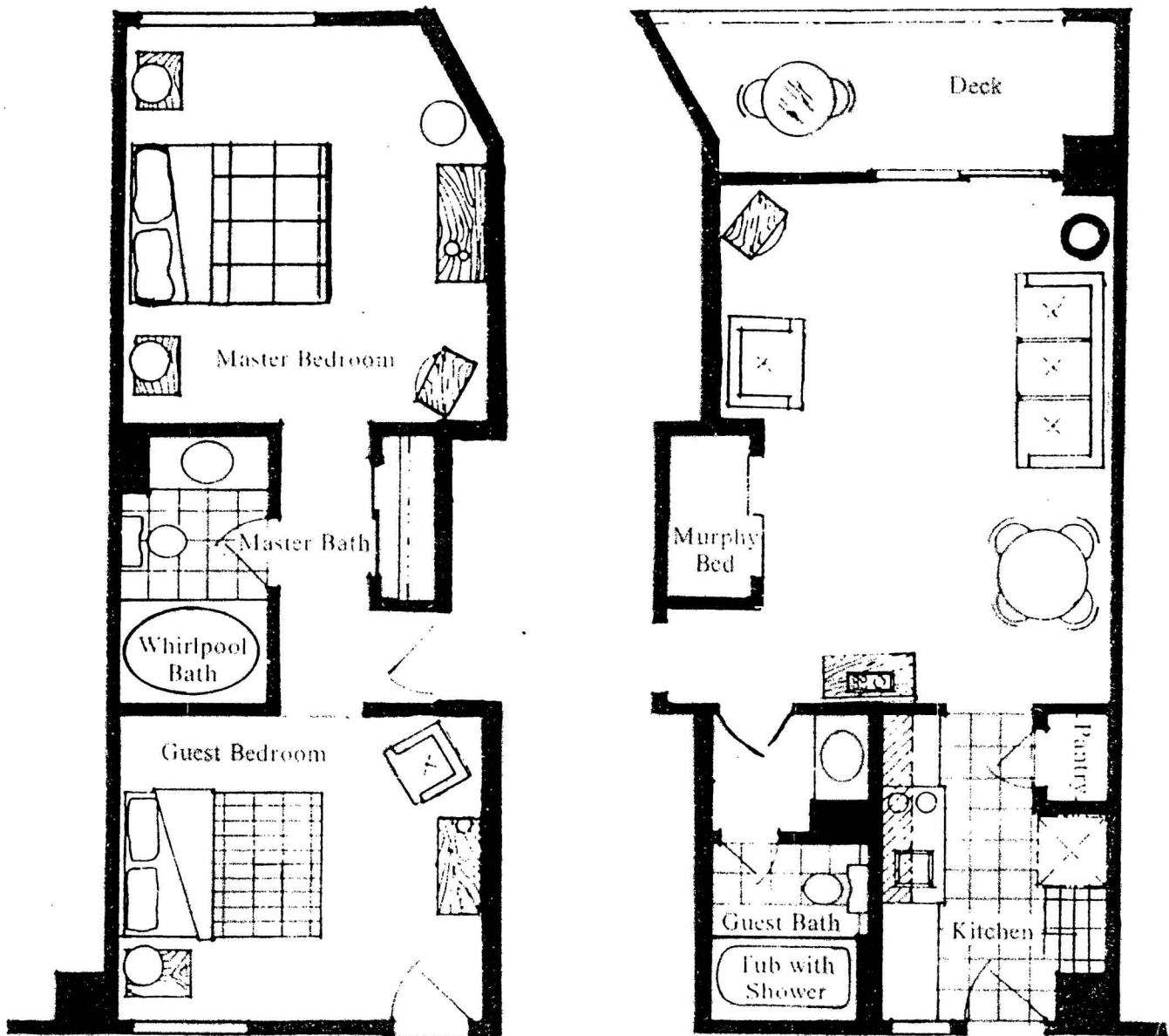
LODGE CONDOS

3RD, 4TH & 5TH FLOORS

UNIT DESCRIPTION: THE FLOORPLAN BELOW DEMONSTRATES THE CONCEPT OF A LOCK-OFF UNIT WHICH REVOLVES AROUND THE ABILITY TO DIVIDE A TWO BEDROOM-TWO BATH CONDOMINIUM INTO A KITCHEN/LIVING ROOM STUDIO WITH ONE BATH AND A SEPARATE LOCKED-OFF TWO BEDROOM-ONE BATH STUDIO. EACH SECTION WILL HAVE ITS OWN PRIVATE ENTRANCE AND CAN BE USED BY GUESTS INDEPENDENT OF THE PARTY OCCUPYING THE OTHER SECTION. EACH CONDOMINIUM CAN BE USED IN SEVERAL WAYS:

- ❖ FULL TWO BEDROOM-TWO BATH CONDO WITH BOTH DESCRIPTIONS LISTED BELOW
 - ❖ MAIN-SIDE STUDIO WITH A KITCHEN, LIVING AREA, BATHROOM, AND BALCONY FACING THE WATER
 - ❖ GUEST-SIDE STUDIO WITH A MASTER BEDROOM, GUEST BEDROOM, BATHROOM, AND A PICTURE WINDOW TO THE WATER

*UNITS 509, 511, 513, 515, AND 517 DO NOT HAVE MURPHY BEDS
 *ONE BEDROOM CONDOS IN THE LODGE ARE ALSO AVAILABLE



STUDIO CAN BE EITHER SIDE